

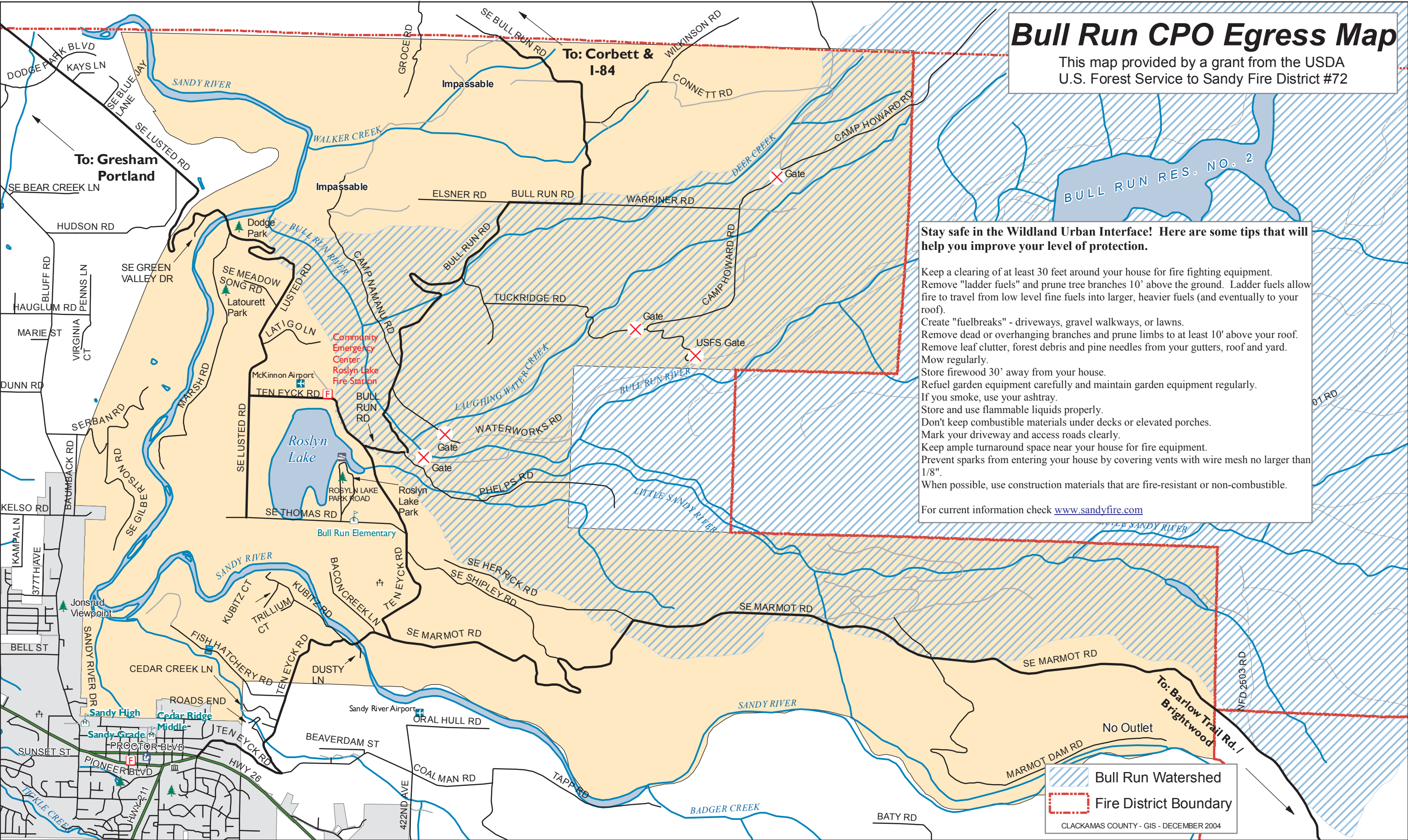
Bull Run CPO Egress Map

This map provided by a grant from the USDA
U.S. Forest Service to Sandy Fire District #72

Stay safe in the Wildland Urban Interface! Here are some tips that will help you improve your level of protection.

- Keep a clearing of at least 30 feet around your house for fire fighting equipment.
- Remove "ladder fuels" and prune tree branches 10' above the ground. Ladder fuels allow fire to travel from low level fine fuels into larger, heavier fuels (and eventually to your roof).
- Create "fuelbreaks" - driveways, gravel walkways, or lawns.
- Remove dead or overhanging branches and prune limbs to at least 10' above your roof.
- Remove leaf clutter, forest debris and pine needles from your gutters, roof and yard.
- Mow regularly.
- Store firewood 30' away from your house.
- Refuel garden equipment carefully and maintain garden equipment regularly.
- If you smoke, use your ashtray.
- Store and use flammable liquids properly.
- Don't keep combustible materials under decks or elevated porches.
- Mark your driveway and access roads clearly.
- Keep ample turnaround space near your house for fire equipment.
- Prevent sparks from entering your house by covering vents with wire mesh no larger than 1/8".
- When possible, use construction materials that are fire-resistant or non-combustible.

For current information check www.sandyfire.com



 Bull Run Watershed
 Fire District Boundary
CLACKAMAS COUNTY - GIS - DECEMBER 2004